



Ludger a Proud Sponsor of Glycobiology Gordon Research Conference (GRC) 2025

Ludger is delighted to be one of the proud sponsors of the upcoming GRC conference, titled *The Biological Role of Glycans as Key Regulators of Life*. This prestigious event will take place in Lucca (Barga), located in the stunning Tuscany region of Italy, from **23rd to 28th March 2025**.

The **Glycobiology GRC** is a renowned international conference that brings together scientists from various disciplines to advance glycobiology through pioneering research, collaboration, and mentorship for researchers at all career stages.

Stay tuned for further updates and more details about the conference. Alternatively, feel free to **contact us** to discuss how we can support and help drive forward the applications of your glycobiology research!



Image courtesy of Gordon Research Conference

Conference link: <https://www.grc.org/glycobiology-conference/2025/>



Spotlight on Glycomics Collaboration with UCL

We are thrilled to announce an exciting development in our glycomics research partnership with **University College London's Global Institute for Health**. **Dr Daniel Spencer**, our Head of Development at Ludger since 2003 and a key collaborator in this initiative, has been invited to become an **Honorary Associate Professor at UCL**. This prestigious recognition reflects Hon. Assoc Prof. Dr. Spencer's significant contributions to the field, including supervising over 15 doctoral candidates in glycomics.

This collaboration aims to advance the understanding of the plasma glycome and its role in patient health. Over the coming years, Daniel and UCL colleagues will work to harness the power of glycomics in pinpointing and analyzing the health impacts reflected in plasma glycan profiles, paving the way for innovative approaches to personalized healthcare.

We look forward to the breakthroughs this partnership will bring!

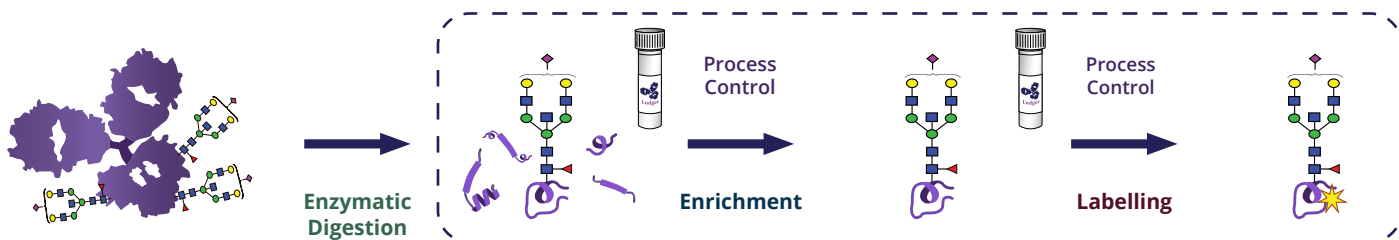
Introducing Our New IgG Glycopeptide Standard

We are excited to announce the launch of our **IgG Glycopeptide Standard**, specifically designed for use in peptide mapping applications, glycopeptide enrichment and/or labelling, and analysis in liquid chromatography-mass spectrometry (LC-MS) and matrix-assisted laser desorption/ionization (MALDI) workflows.

This high-quality standard is derived from *IgG glycoprotein* that is purified from human serum. The glycopeptides are trypsin-digested and enriched to provide a representative mixture of glycoforms, including bi-antennary oligosaccharides with **sialylation**, **galactosylation**, **GlcNAc-ation**, and **fucosylation**.

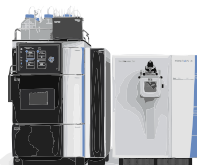
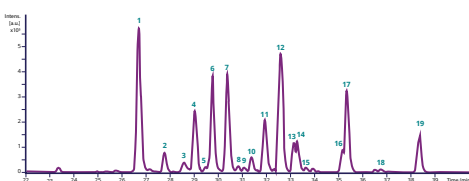
Key Applications:

1) Process Control: Ideal for monitoring glycopeptide enrichment, labelling efficiency and analytical performance.

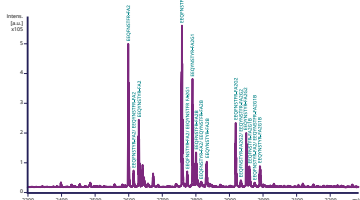


2) System Suitability Standard: Ensures confidence in glycopeptide mapping experiments.

Liquid Chromatography-Mass Spectrometry (LC-MS)



Matrix-Assisted Laser Desorption/Ionization (MALDI)



Glycan structure	Glycan Name	Peak ID
	A1F	16, 18, 19
	FA2	1, 3, 7
	FA2B	2, 10
	FA2G1	4, 6, 8, 9, 12, 14
	FA2G1B	5, 13
	NA2F	11, 15, 17

This standard enables researchers to achieve accurate and reproducible results when characterising glycopeptides in complex samples, supporting advancements in biopharmaceutical development and glycoproteomics research.

Whether for LC-MS or Maldi analysis, our Bi-Antennary Glycopeptide Standard provides the reliability you need to optimise and validate your workflows.

Order Now (Catalogue Number: **GPEP-IGG-01**) or enquire more information at info@ludger.com and Elevate Your Glycopeptide Analysis experience.

Join our Glycotechnology News Service

Subscribe

