

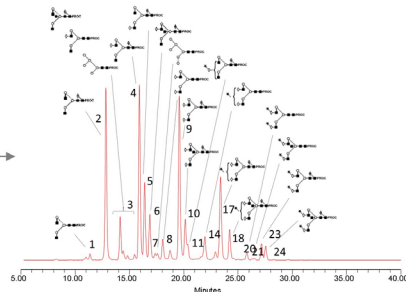
Workflow for Level 3 N-glycan Site-Specific Glycosylation Analysis

Level 1 and 2 Whole N-glycome profiling and characterisation

Release and fluorescent labelling of N-glycans followed by full characterisation

Include process controls

- Well characterised glycoprotein standard – e.g. Ludger human IgG positive control [GCP-IGG-100U]
- Formulation buffer – negative control



Reverse-phase LC peptide/ glycopeptide fraction collection

Include system suitability, reference and calibration standards

- Fluorescently labelled Glucose Homopolymer (GHP) for Glucose Units (GU) allocation
- Fluorescently labelled glycan standards common to analysed samples
- Glycopeptide standards

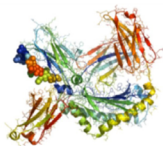
MALDI-MS or nano-LC-MS
Analysis of glycopeptides

HILIC-UHPLC-FLR
Analysis of glycans

Reduction/alkylation and protease digestion

PNGase F release and labelling on glycopeptide fractions

Level 3 N-glycan site-specific glycosylation analysis



Glycoprotein